



Confocal Microscope A1 HD25/A1R HD25

# A1 HD25

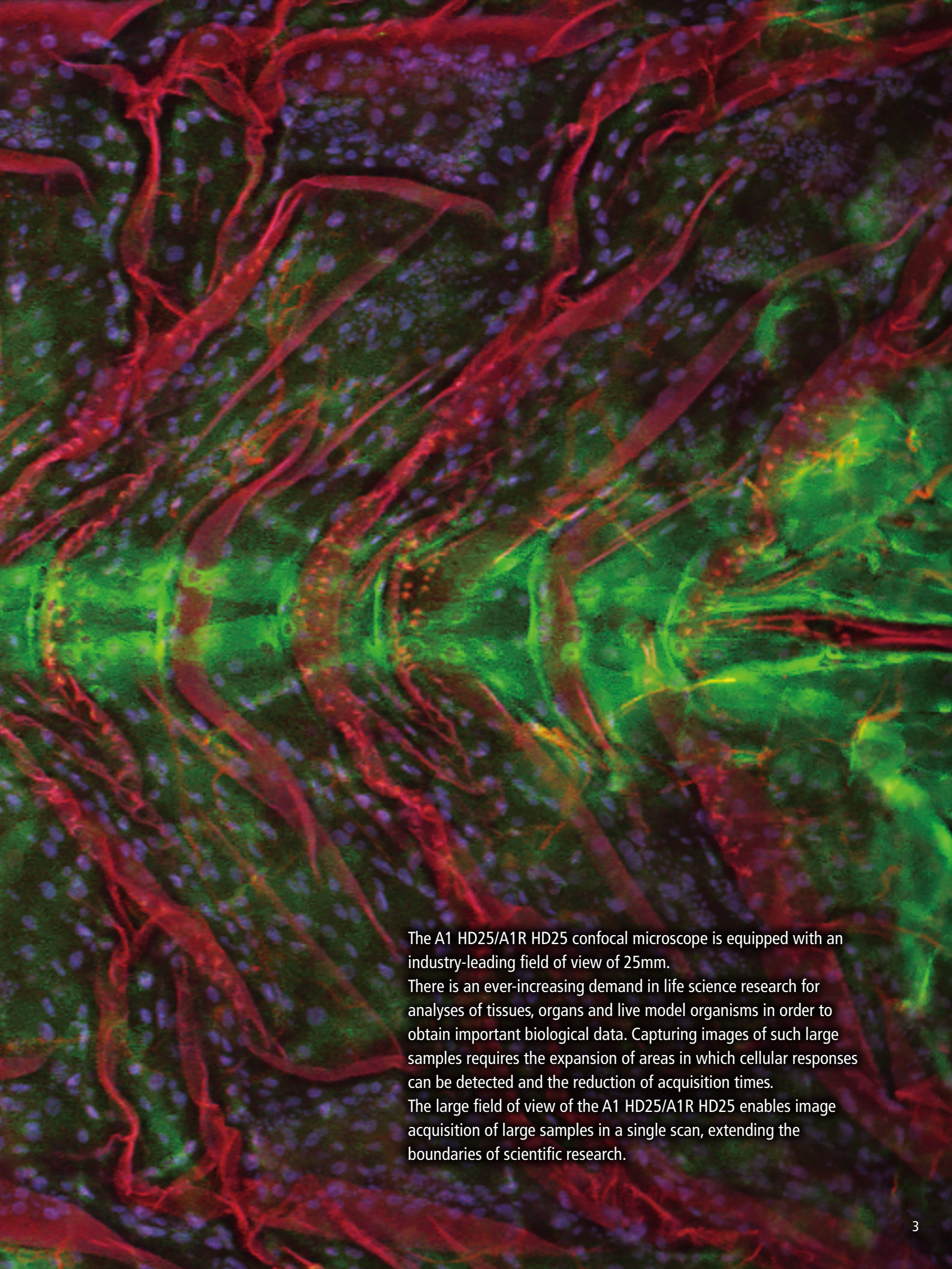
# A1 R HD25

Confocal Microscope



Shedding New Light On **MICROSCOPY**

See the bigger picture



The A1 HD25/A1R HD25 confocal microscope is equipped with an industry-leading field of view of 25mm.

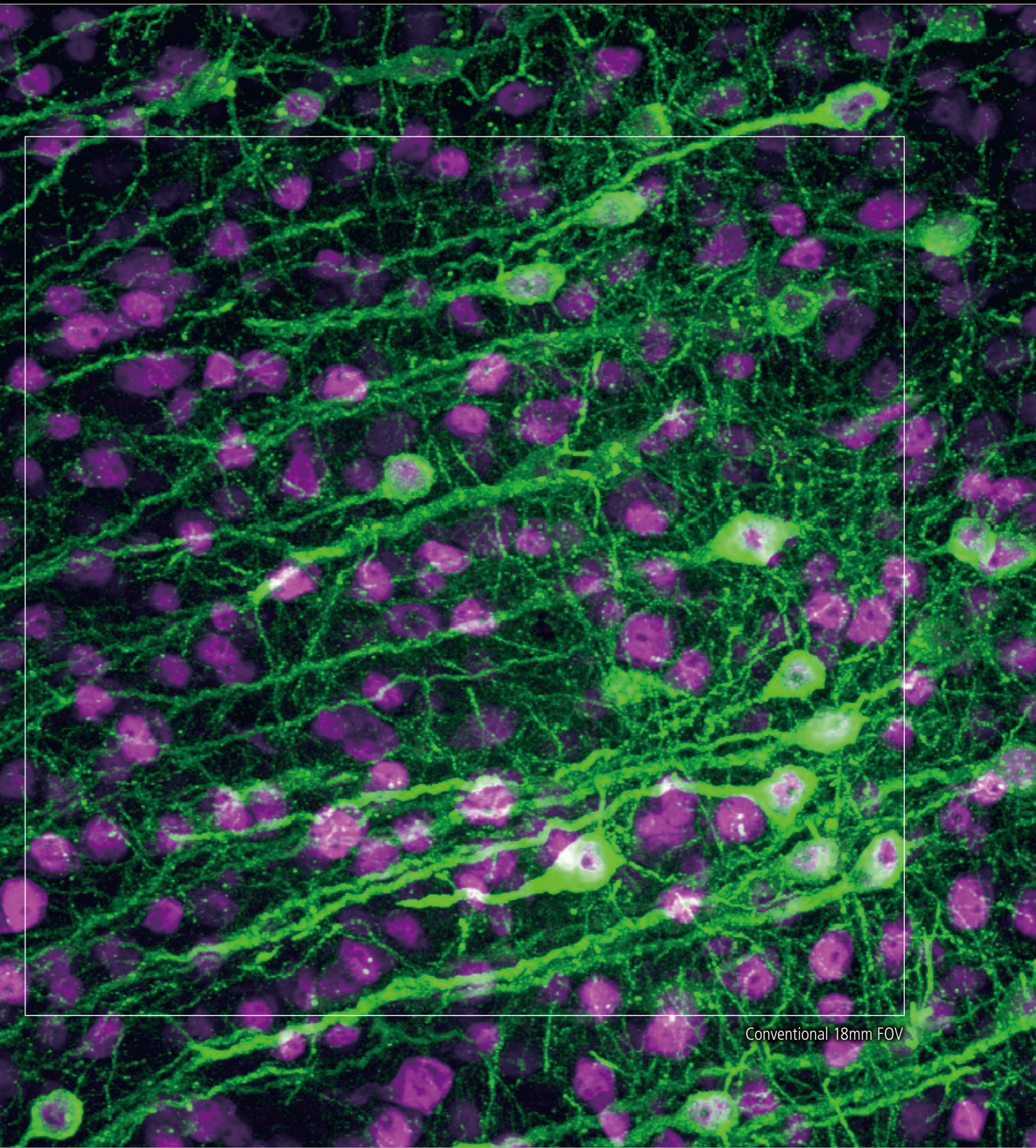
There is an ever-increasing demand in life science research for analyses of tissues, organs and live model organisms in order to obtain important biological data. Capturing images of such large samples requires the expansion of areas in which cellular responses can be detected and the reduction of acquisition times.

The large field of view of the A1 HD25/A1R HD25 enables image acquisition of large samples in a single scan, extending the boundaries of scientific research.

# See more than before in confocal resolution

With nearly twice the field of view of conventional point scanners, the A1 HD25/A1R HD25 enables users to obtain significantly more data by capturing more of the specimen in each shot.





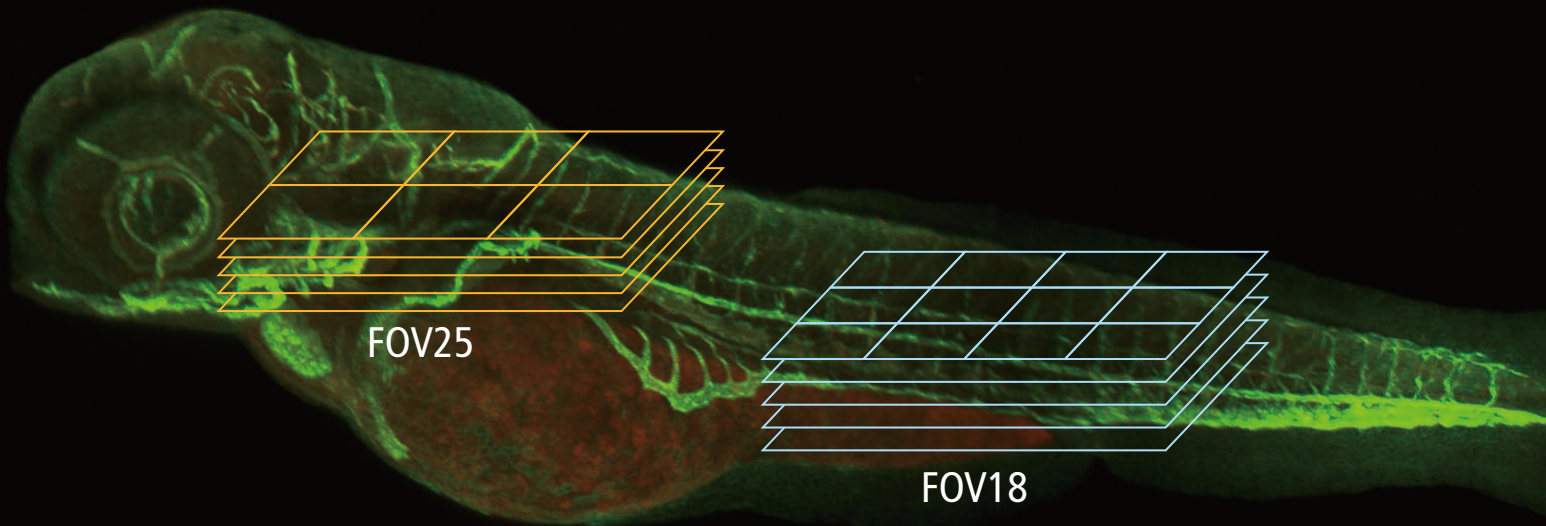
Conventional 18mm FOV

New 25mm FOV

# Fewer total images required for large high-resolution image stitching

Together with the Ti2-E inverted microscope, the A1 HD25/A1R HD25 is capable of high-quality 25 mm FOV images that capture nearly twice the imaging area of conventional point scanners in each stage position, enabling the acquisition of more spatial information in a single image than ever before.

The large FOV reduces both the required number of images for stitching large images and image acquisition time, enabling efficient and high-throughput imaging even with large samples such as live model organisms, tissues and organs.

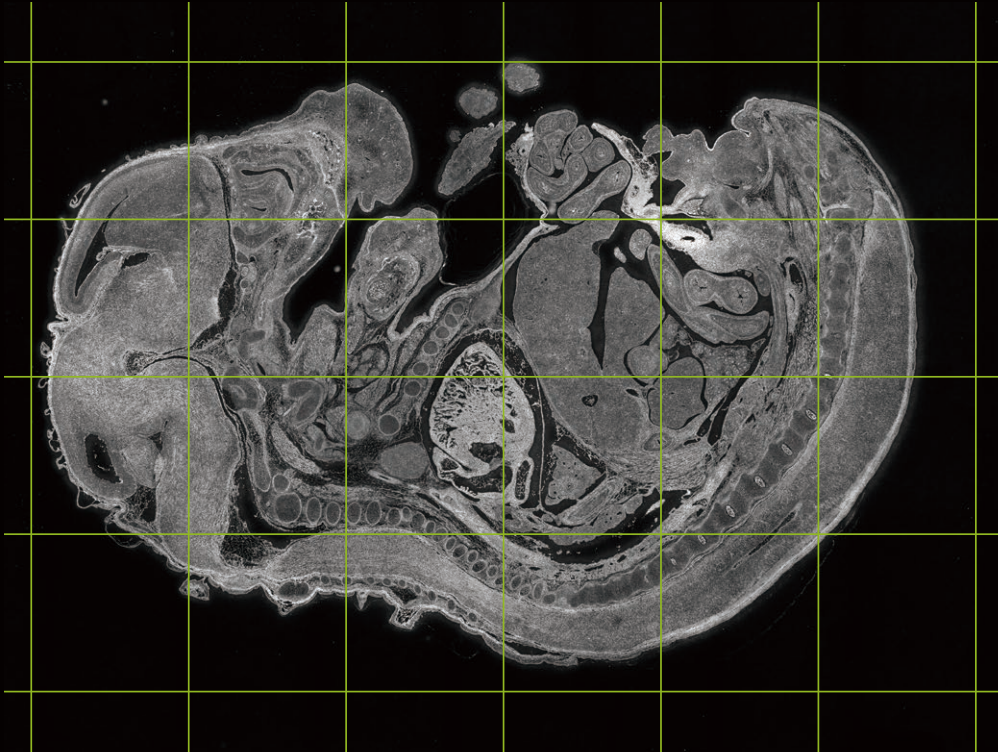


The large FOV can greatly reduce the number of images that are required, in particular for 3D (XYZ) large image stitching.

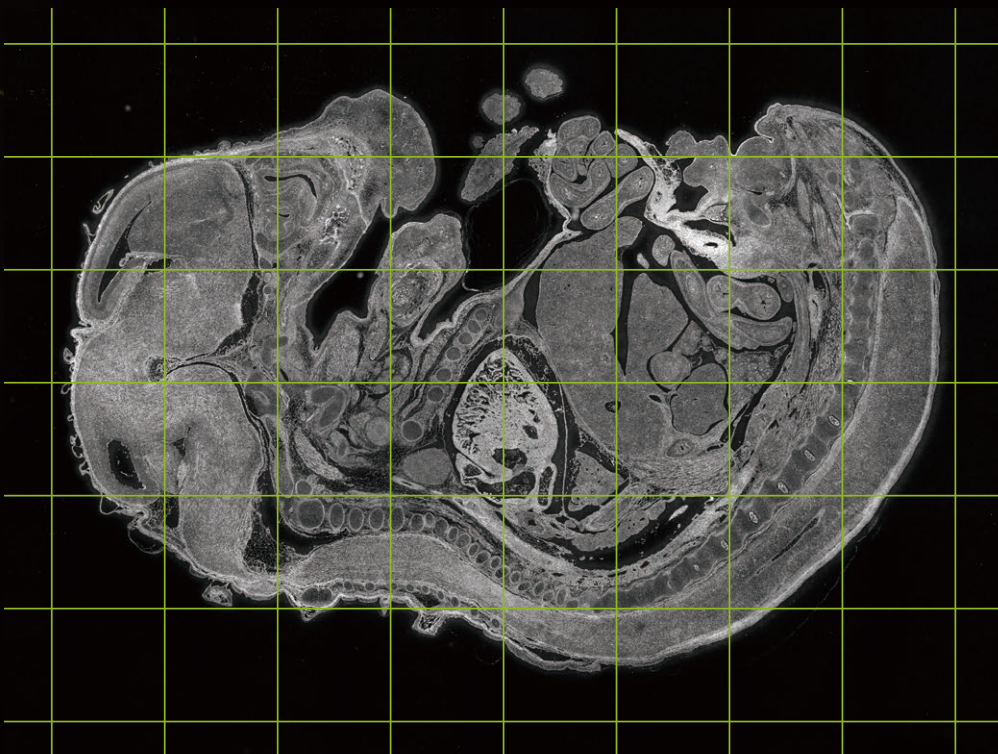
Total number of images with an FOV of 25: 6,600 (66 for XY stitching, 100 for Z stack)

Total number of images with an FOV of 18: 12,000 (120 for XY stitching, 100 for Z stack)

Doubled image area reduces the number of images by half

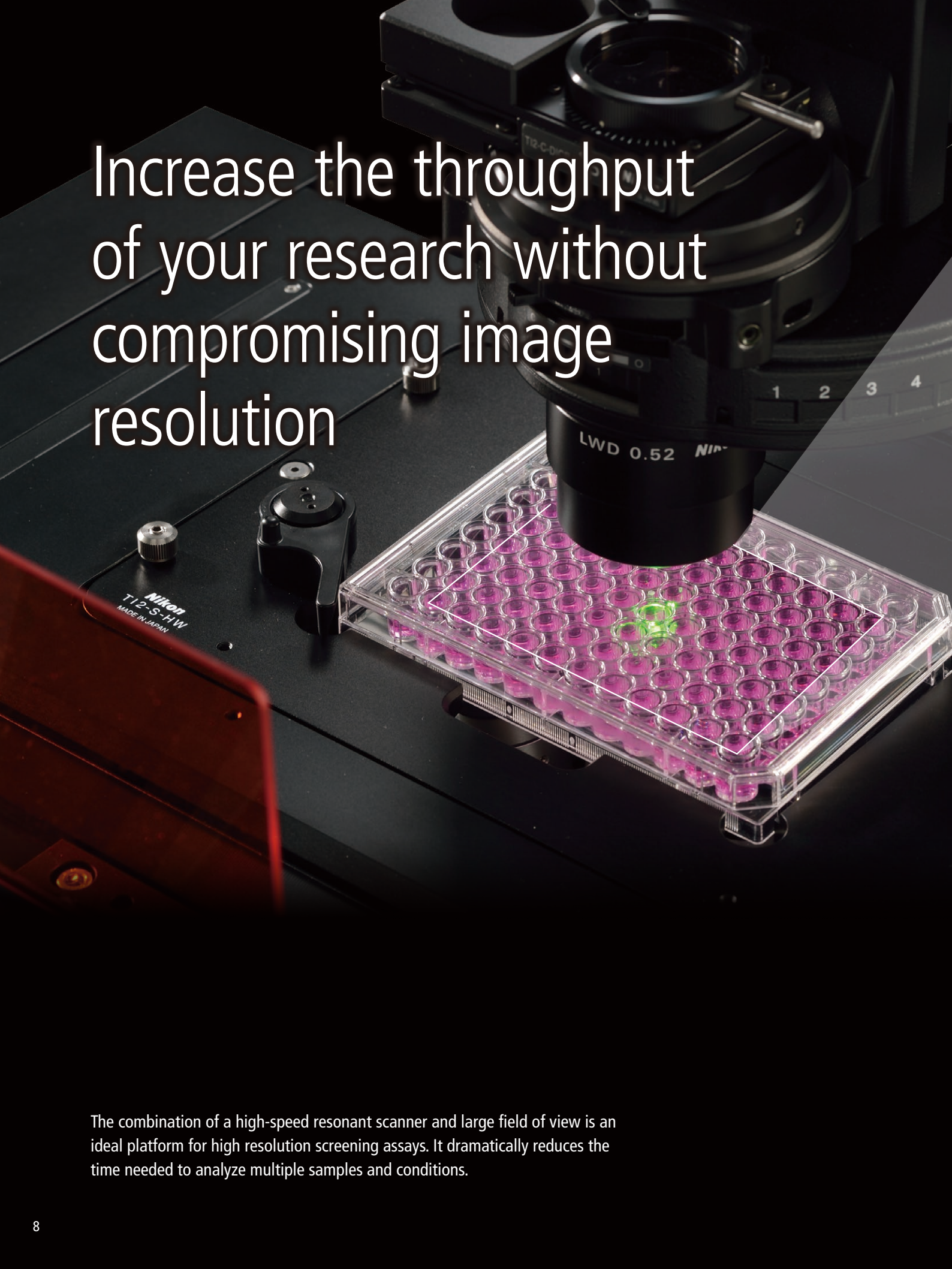


FOV 25 of A1 HD25/A1R HD25: a total of 24 frames



Conventional FOV 18: a total of 48 frames

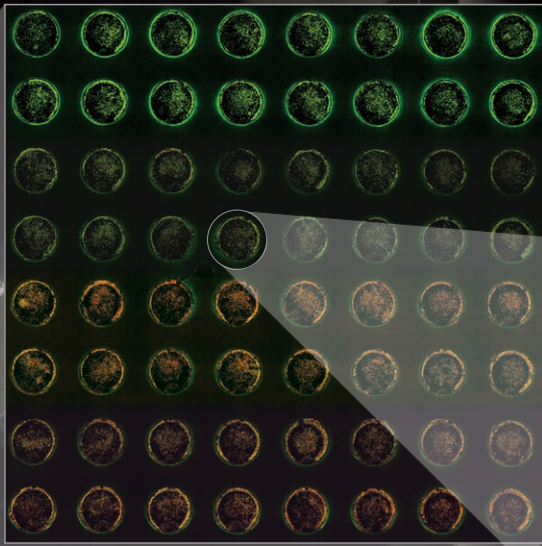
\* Images are for illustrative purposes only

A Nikon T12-S-HW microscope is shown in a dark setting, focused on a 96-well plate. The plate contains a grid of wells, each filled with a pink liquid. A bright green laser spot is directed at one of the wells in the center of the plate. The microscope's objective lens is positioned directly above the plate, and the text 'LWD 0.52' is visible on the lens. The microscope's body is black, and the plate is clear plastic. The background is dark, with some faint numbers (1, 2, 3, 4) visible on the right side of the microscope's stage.

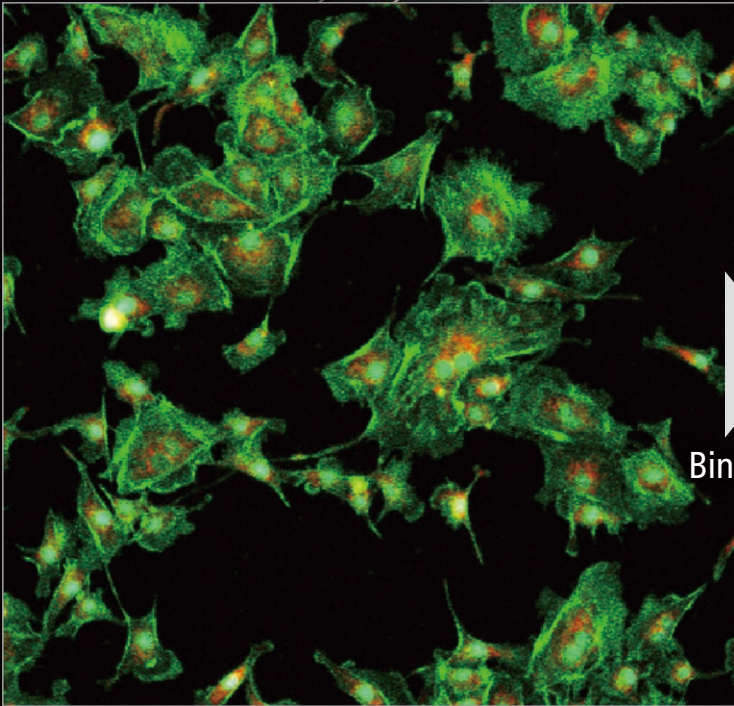
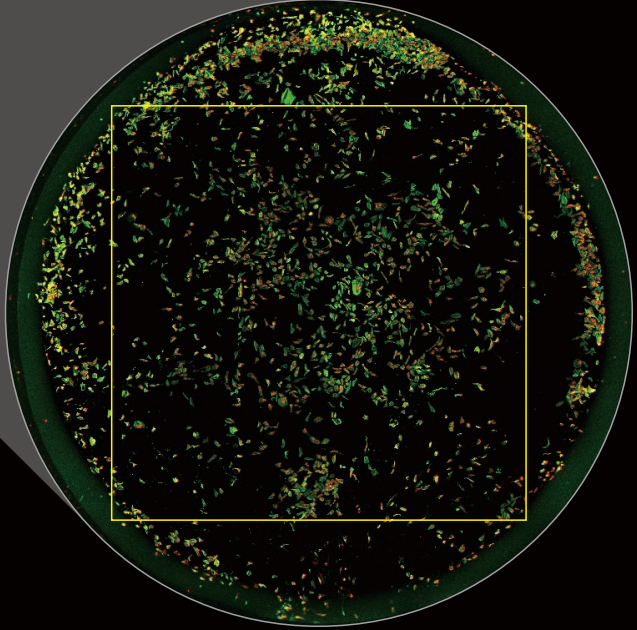
Increase the throughput  
of your research without  
compromising image  
resolution

The combination of a high-speed resonant scanner and large field of view is an ideal platform for high resolution screening assays. It dramatically reduces the time needed to analyze multiple samples and conditions.

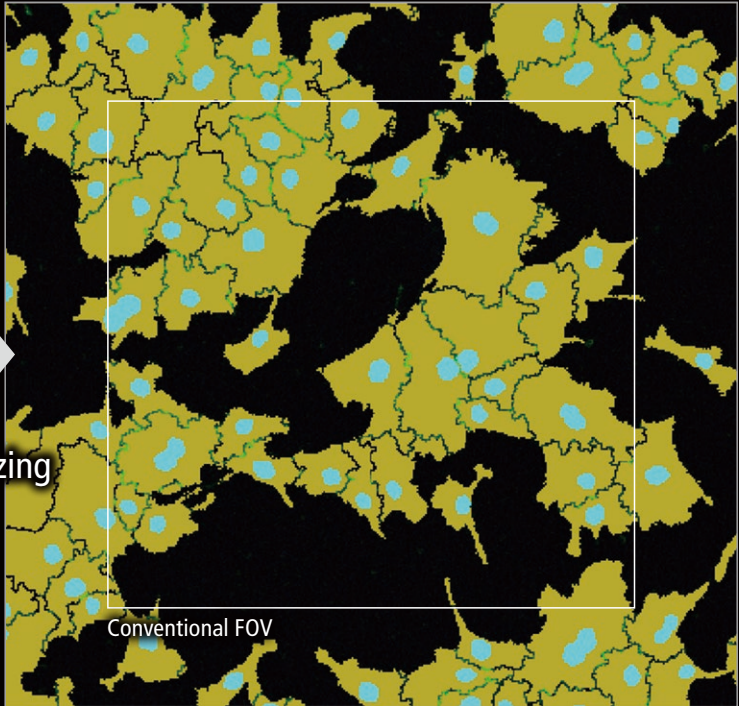




High-speed acquisition of entire wells (with a 4X objective)



Binarizing



Conventional FOV

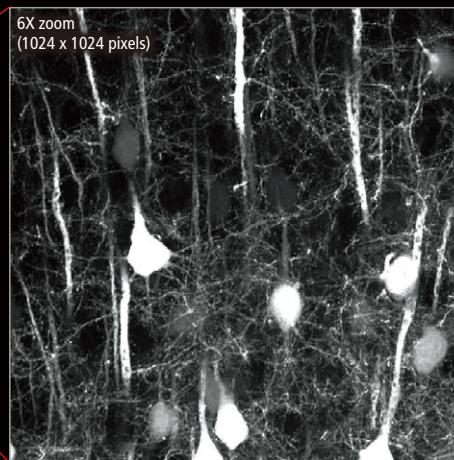
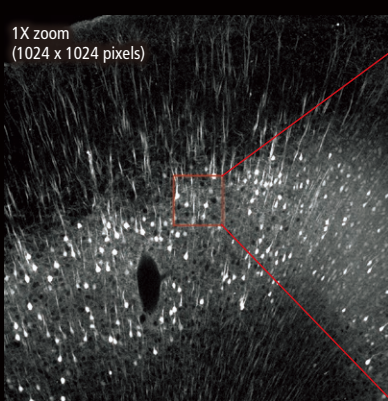
Large FOV enables measurement of larger areas and high-throughput analysis.

# Ultrafast resonant scanner

The resonant scanner technologies incorporated in the A1R HD25 produce high-resolution, high-speed imaging at unparalleled levels. The A1R HD25 reduces photobleaching and can acquire the best images for high throughput live cell imaging at high resolutions or multi-dimensional dynamic imaging for applications such as time-lapse and multi-stage position time-lapse experiments.

## High definition imaging up to 1K x 1K

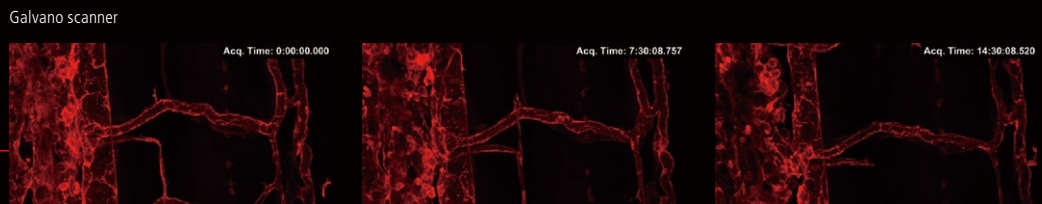
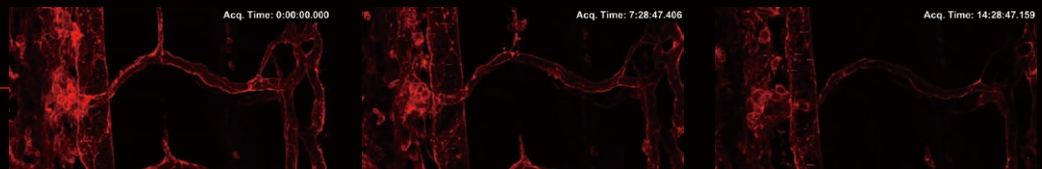
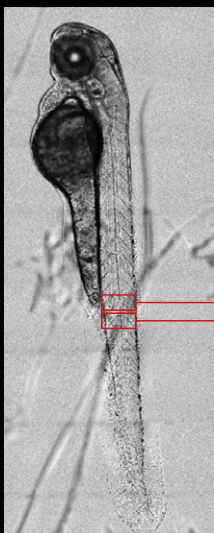
1024 x 1024 pixels enables acquisition of high-resolution, high-quality images at lower magnifications, enabling compatibility with a wide range of samples.



Comparison of a large FOV image and 6X zoomed image (1024 x 1024 pixels) of fine structures in a 2 mm brain slice of H-line mouse cleared with RapiClear1.52, SunJin Lab. Image courtesy of: Drs. Ryosuke Kawakami, Kohei Otomo, and Tomomi Nemoto, Research Institute for Electronic Science, Hokkaido University

## Low phototoxicity for live cells

High speed imaging capability up to 720 fps, in combination with a large field of view, dramatically increases imaging throughput. This scanning method reduces the exposure time of the sample to excitation light, minimizing phototoxicity and photobleaching.



Resonant scanner

Comparison of photobleaching of fluorescent proteins when images are acquired using both galvano and resonant scanners. 3D time-lapse images of trunk vasculature in zebrafish larva expressing LIFEACT-mCherry (probe for F-actin) in endothelial cells were acquired every 30 minutes over a period of 15 hours using a galvano scanner (average of 2 images) and a resonant scanner (average of 64 images).

1024 x 512 pixels, 2X zoom, 100 Z-stack images

Note that photobleaching of LIFEACT-mCherry was dramatically suppressed using the resonant scanner.

Image courtesy of: Shinya Yuge Ph.D., and Shigetomo Fukuhara, Ph.D., Department of Molecular Pathophysiology, Institute of Advanced Medical Sciences, Nippon Medical School

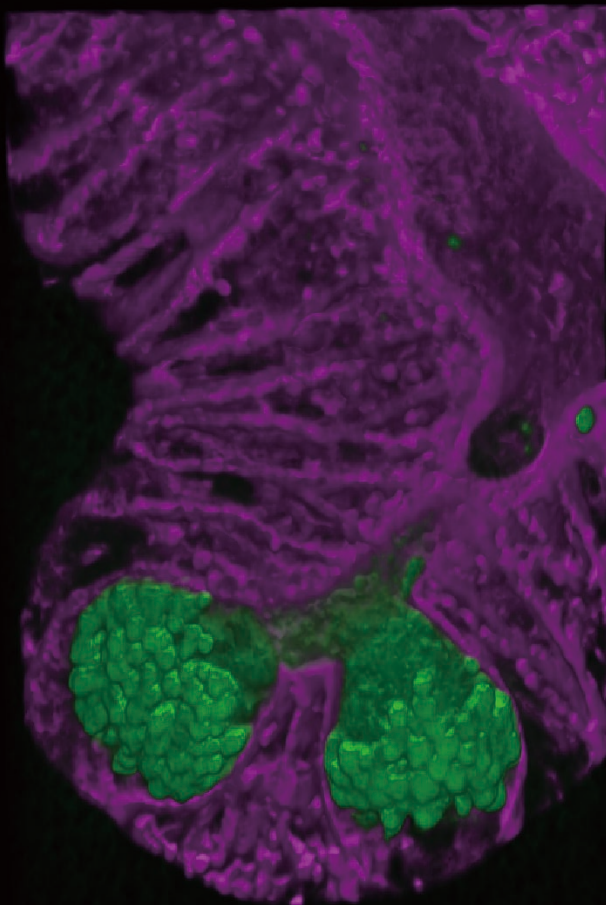
## Fast large-volume time-lapse imaging

Secretion of Paneth cell granule in response to carbachol was acquired by high-speed 4D live imaging (acquisition of 61 steps of Z-stack images at 1.98 s/volume using Piezo Z-stage and 1K resonant scanner) using enteroids, the three dimensional culture of intestinal epithelial cells. As the innate immune response, the secretion of Paneth cell granules (green) one by one into enteroid lumen is clearly observed with high-definition 3D time-lapse imaging.

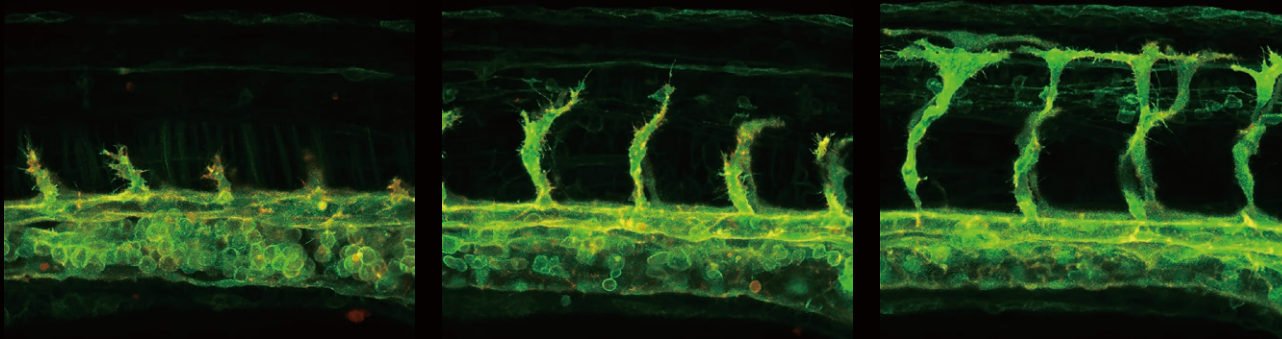
Green: Zinpyr-1 (Paneth cell granules), Purple: CellMask™ Deep Red (plasma membrane)

Excitation wavelength: 488 nm, 638 nm Resolution: 1024 × 512 pixels

Image courtesy of: Dr. Yuki Yokoi, Dr. Kiminori Nakamura, Dr. Tokiyoshi Ayabe, Innate immunity Laboratory, Department of Cell Biological Science, Faculty of Advanced Life Science, Graduate School of Life Science, Hokkaido University



Scan the QR code to view a video.



Time-lapse imaging of angiogenesis in zebrafish embryos expressing LIFEACT-mCherry (probe for F-actin) and MYR-GFP (probe for plasma membrane) in endothelial cells. 3D time-lapse images were acquired every 2.5 minutes for 14 hours starting from 22 hours post-fertilization using a resonant scanner (average of 64 images).

1024 x 1024 pixels, 2X zoom, 68 Z-stack images

Note that rapid formation and retraction of endothelial filopodia during angiogenesis has been clearly captured.

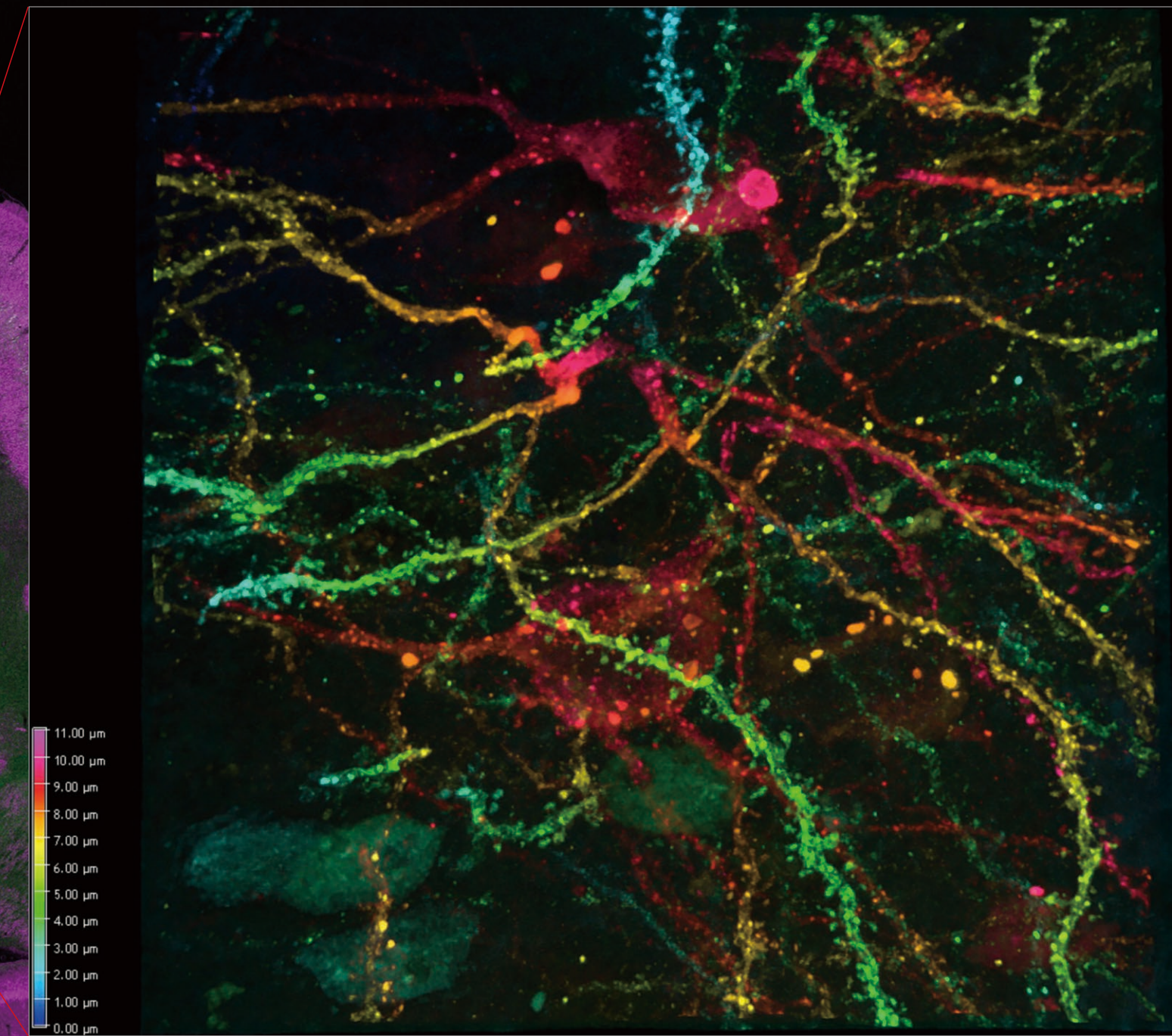
Image courtesy of: Shinya Yuge Ph.D., and Shigetomo Fukuhara, Ph.D., Department of Molecular Pathophysiology, Institute of Advanced Medical Sciences, Nippon Medical School



Scan the QR code to view a video.

# Superior images for both macro and micro imaging

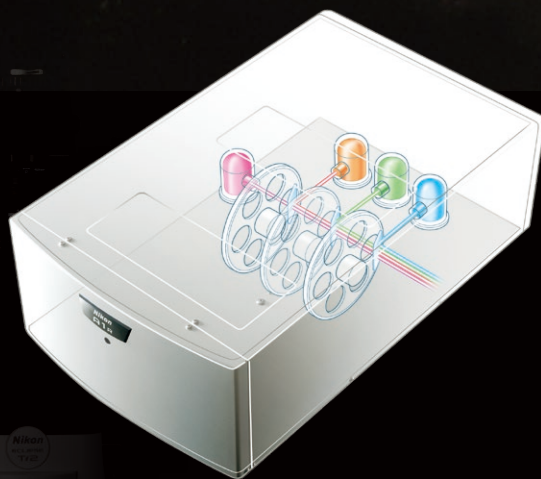
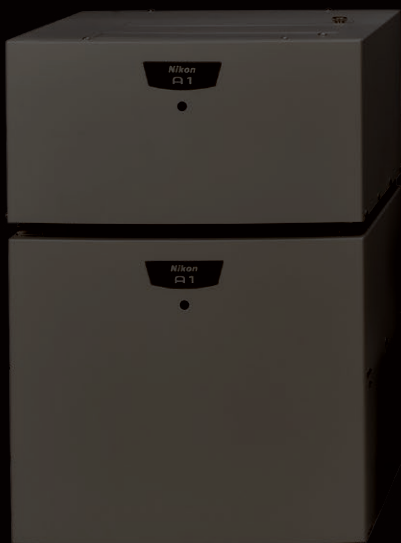
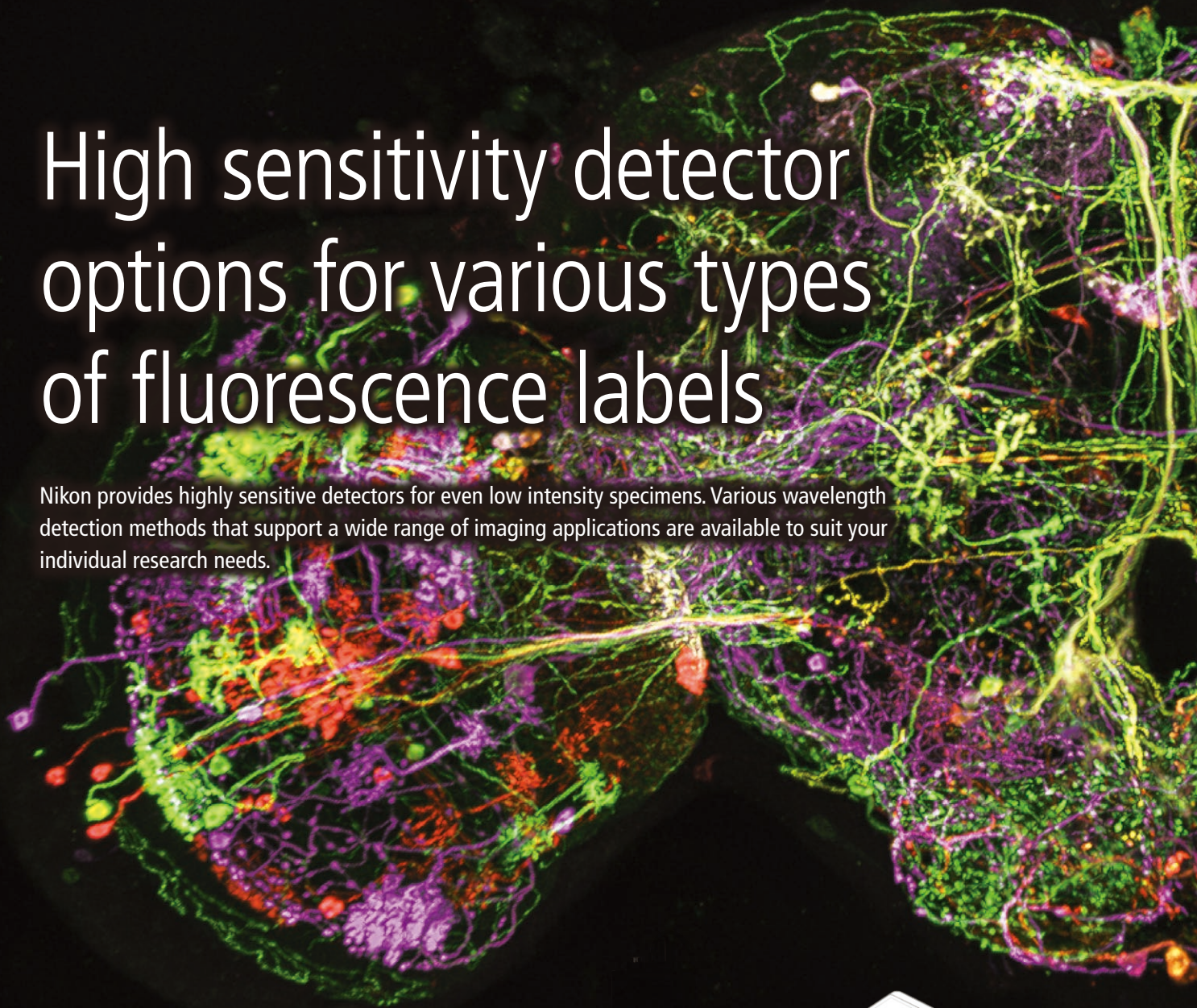
Capture large-scale overview images as well as high magnification images with the same instrument. The 25mm FOV of the A1 HD25/A1R HD25 is effective for observation of large samples, while its 1Kx1K high-definition is ideal for the observation of minute structures.



Stitched overview image of marmoset brain captured with CFI Plan Apochromat Lambda 10X objective and detailed image of dendritic spines captured with CFI SR HP Plan Apochromat Lambda S 100XC Sil objective

# High sensitivity detector options for various types of fluorescence labels

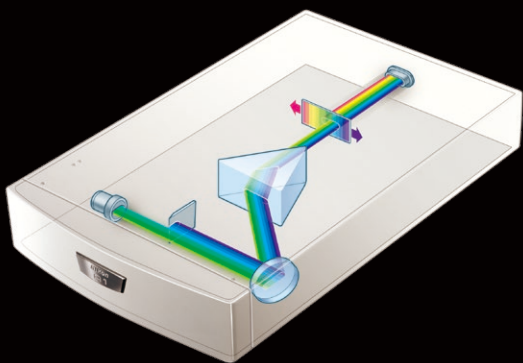
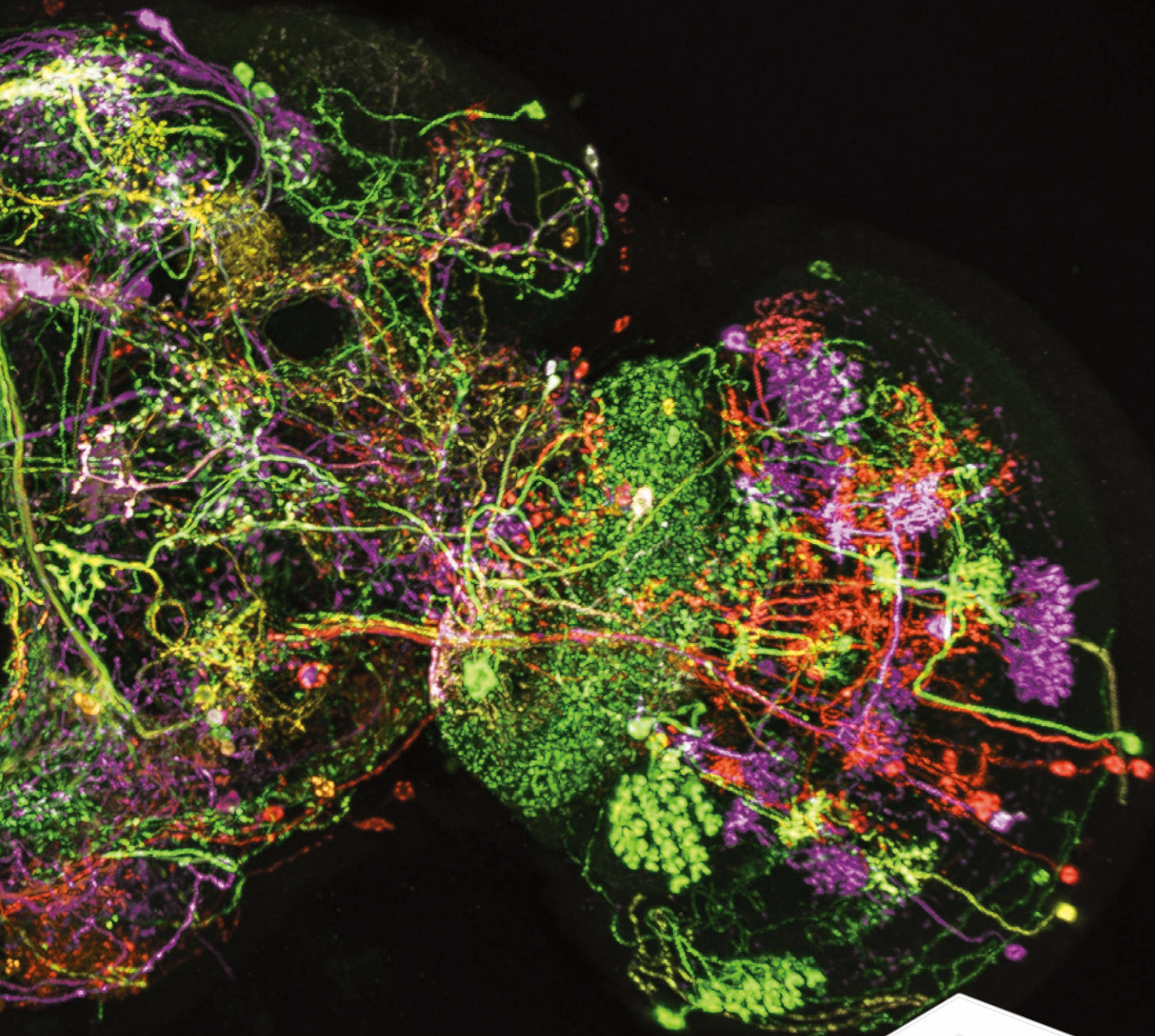
Nikon provides highly sensitive detectors for even low intensity specimens. Various wavelength detection methods that support a wide range of imaging applications are available to suit your individual research needs.



Nikon  
A1

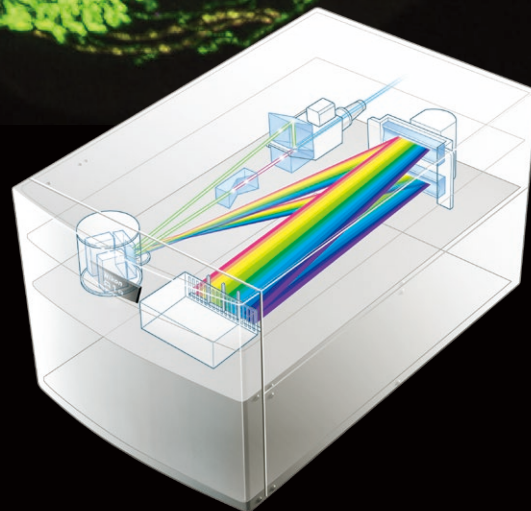
**A1-DUG-2 GaAsP Multi Detector Unit**

High-sensitivity 4-channel detection



### A1-DUVB-2 GaAsP Detector Unit

Flexible detection with high sensitivity



### A1-DUS Spectral Detector Unit

Accurate separation of closely overlapping fluorescence spectra and the elimination of autofluorescence

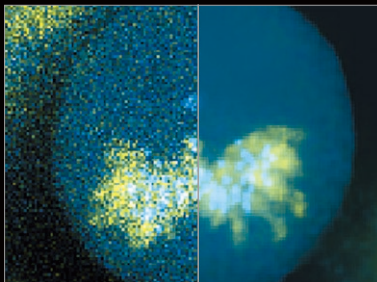
# A unified acquisition and analysis software platform

NIS-Elements C, Nikon's unified software platform, provides intuitive workflow for confocal imaging. With graphical programming tools for automating acquisition and analysis, the comprehensive operational environment can be fully customized for any level of application needs.

## Display & Processing

### Denoising

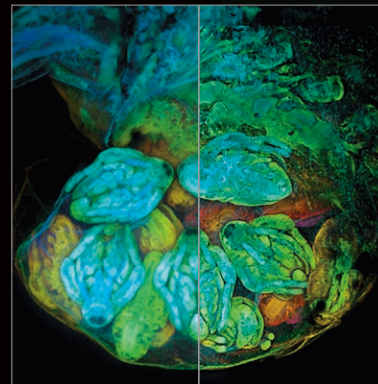
Efficient tools for removing noise or graininess from images, improving image quality in low light imaging. This greatly improves the output quality of the image for analysis and presentation.



Before denoising      After denoising

### Deconvolution

Robust algorithms for noise removal and enhanced correction of spherical aberration are provided to actualize theoretical resolutions.

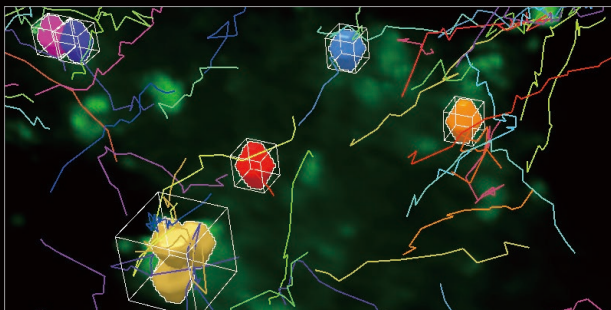


Before deconvolution      After deconvolution

## Image analysis

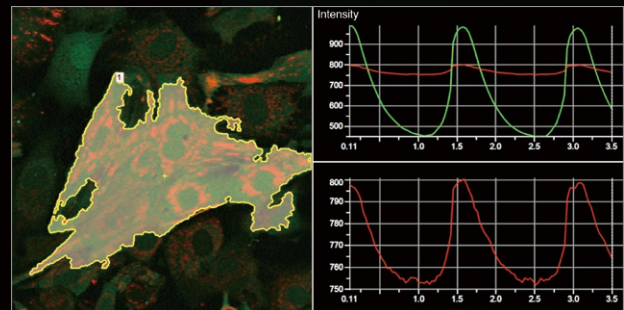
### 2D and 3D object tracking

Allows the identification and tracking of objects to measure their velocity, acceleration, distance and direction.



### Real-time measurement

Time measurements can be carried out in real time and visualized during acquisition.





## Dedicated software modules



### NIS-Elements ER

The NIS-Elements ER module increases conventional confocal resolution by up to two-fold, providing up to 120nm resolution in XY and 300nm in Z.



Image courtesy of: Drs. Yutaro Kashiwagi and Shigeo Okabe,  
Department of Cellular Neurobiology, Graduate School of Medicine  
and Faculty of Medicine, The University of Tokyo.

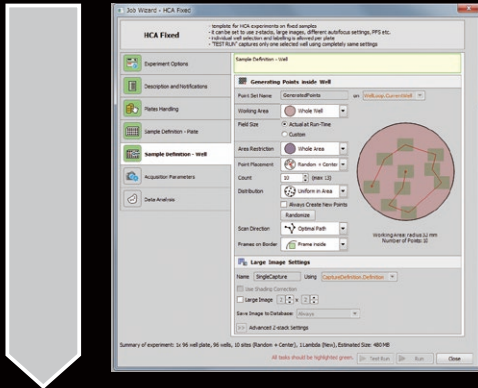


## High-Content Acquisition and Analysis

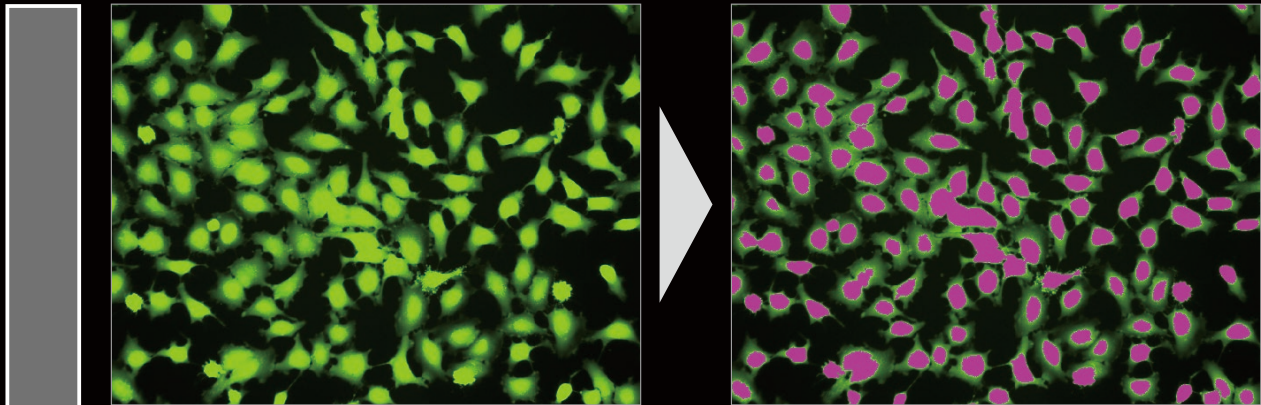
With fully-automated acquisition and analysis of a large number of high-content, multidimensional images following an easy stepwise workflow, HCA offers quick experimental setups and an immediate view of measurement data, well by well, during acquisition and via a heat map for trend observation and further analysis.

### Sequential HC Template workflow from acquisition to analysis

#### Acquisition

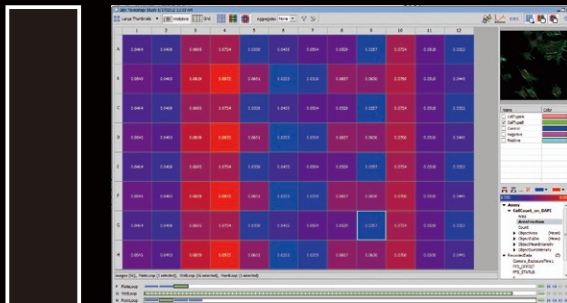


#### Processing and Analysis

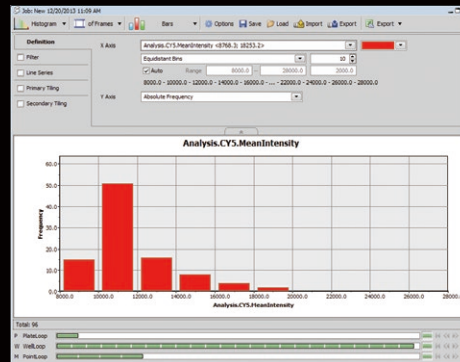


Light intensity analysis

#### Result



Heat map



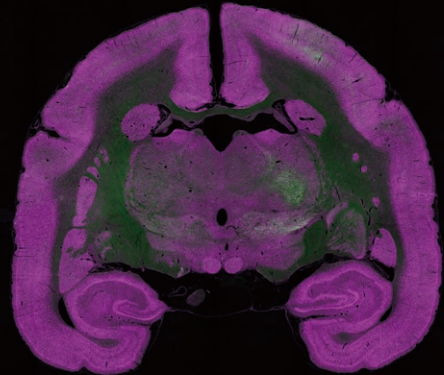
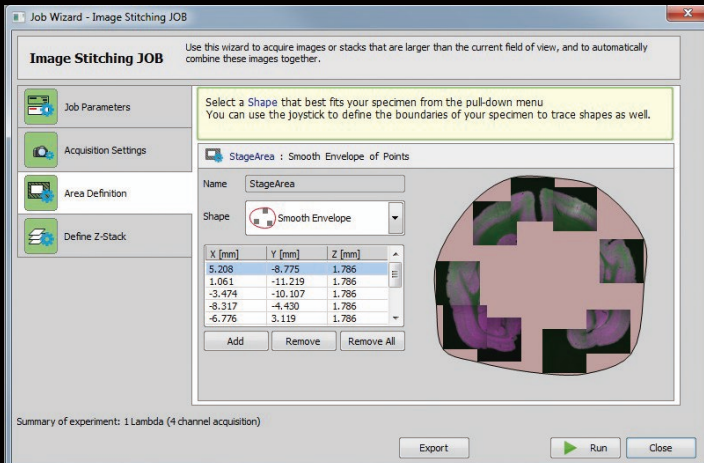
Graph

HC template enhances the efficiency of your experimental workflow

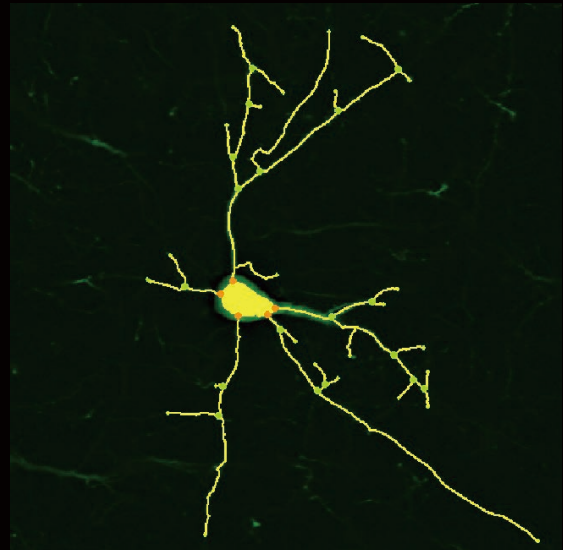
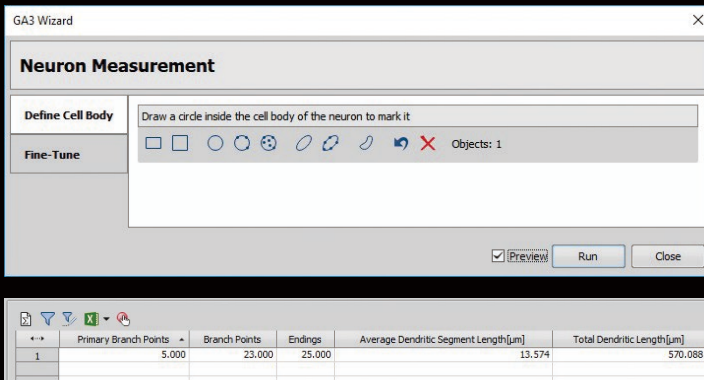


## JOBS

Enables the easy creation of more complex and customized experimental templates, from image acquisition to analysis, without the need for advanced data programming knowledge. JOBS automatically conducts observation processes such as image acquisition, image and data analysis and result display. It improves efficiency and reduces the time needed for acquisition, analysis and mining of data.



## Powerful analysis tools



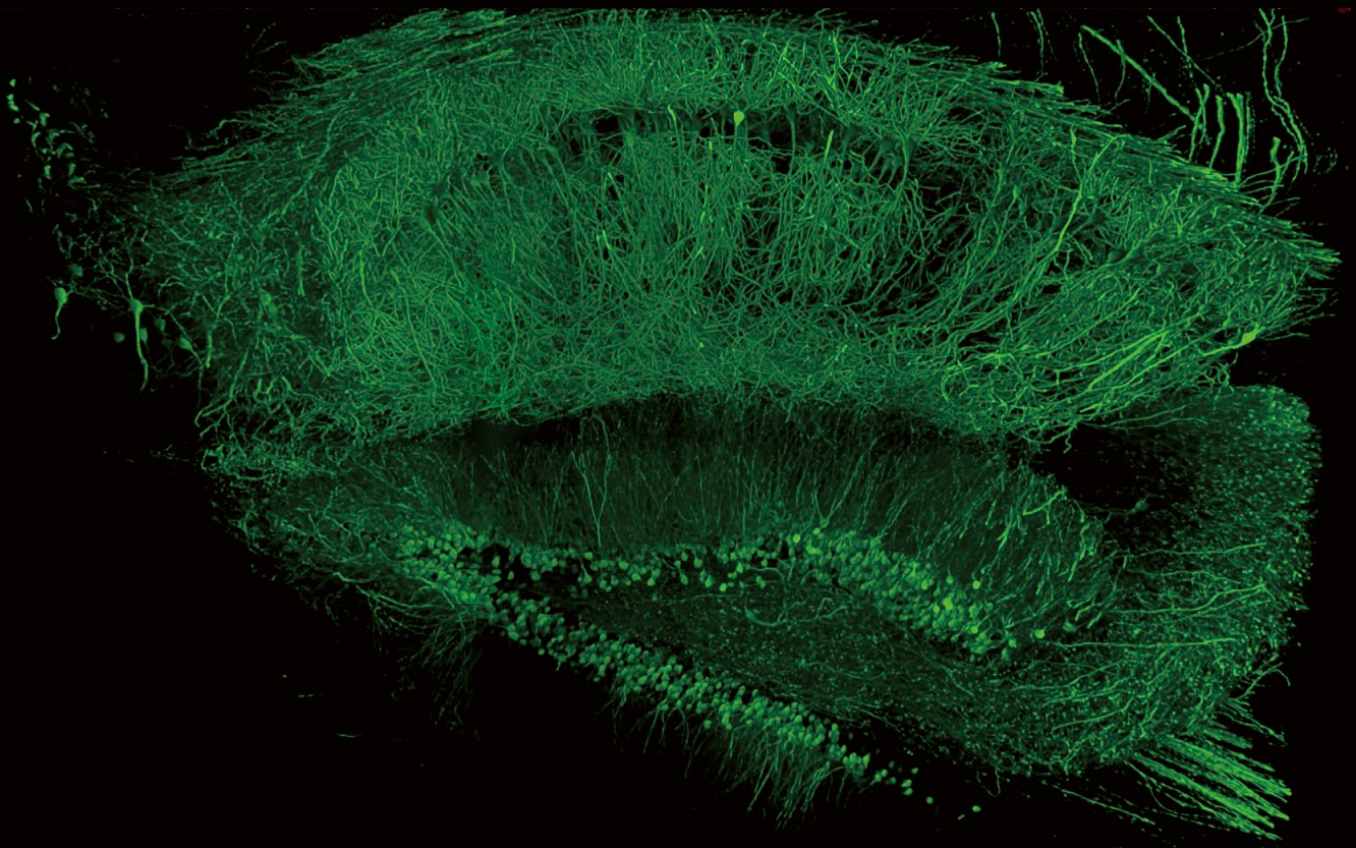
## General Analysis

General Analysis is a toolbox of powerful segmentation functions that allows users to create custom analysis routines focused on obtaining statistical data from microscope images. Users can make easy to follow interfaces for image analysis, and interactively (or fully automatically) analyze images and output custom results.

# Superior optical technologies to support all confocal applications

Nikon provides a broad range of high-NA objectives with unrivaled optical quality to redefine the boundaries of confocal imaging. Options include silicone oil immersion objectives for thick live cell imaging, large-FOV low-magnification objectives and easy-to-use dry objectives. Chromatic aberrations are corrected from ultraviolet to near infrared range, enabling excellent multicolor imaging.

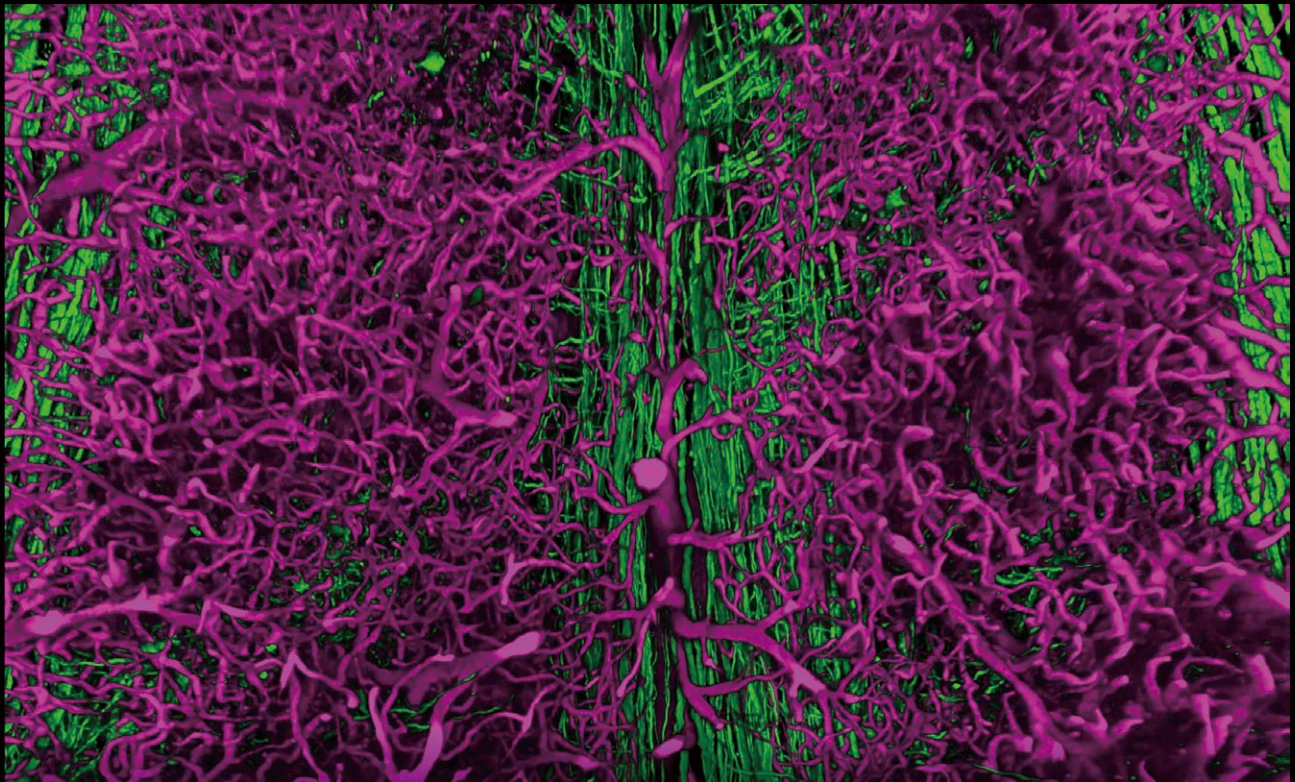




Detailed image of deep hippocampus cleared with RapiClear/SunJin Lab and captured with CFI Apochromat LWD Lambda S 20XC WI



Scan the QR code to view a video.



Neural circuit (green) and blood vessel (magenta) of spinal cord cleared with RapiClear/SunJin Lab captured with CFI Apochromat LWD Lambda S 20XC WI



Scan the QR code to view a video.

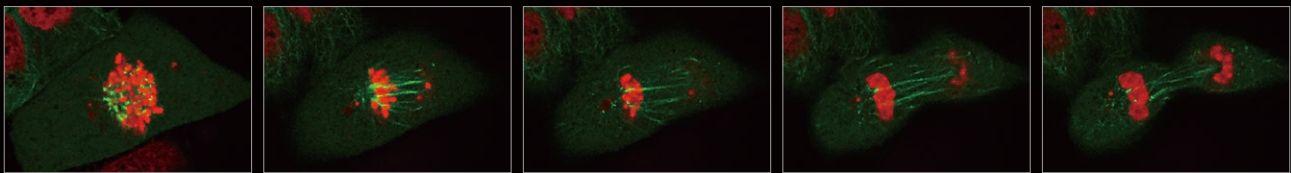
# Optional accessories for live-cell imaging

## For long-time observation

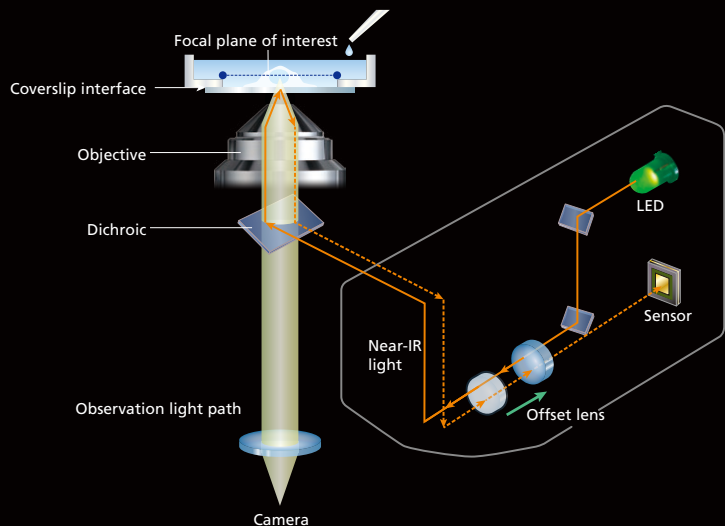
### Perfect Focus System

With the Ti2-E inverted microscopes, the Perfect Focus System (PFS) automatic focus maintaining mechanism can be used. It continuously corrects focus drift during long time-lapse observations or when reagents are added.

\*Use with glass bottom dish is recommended.

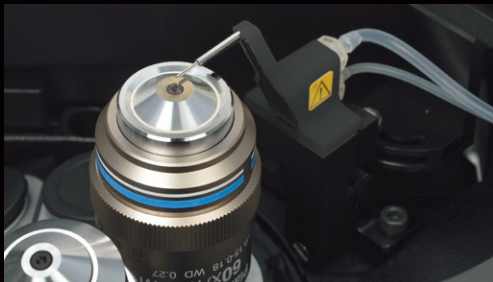


Consistent focus is maintained during time-lapse imaging over thirty minutes.



### Water immersion dispenser

Automatically applies immersion water to the tip of an objective, preventing water from evaporating or overflowing during experiments.



## For high-speed 3D image acquisition

### Motorized piezo Z stage

Allows high-speed line Z scanning in combination with a motorized microscope stage.



## For high-speed live cell imaging during photostimulation

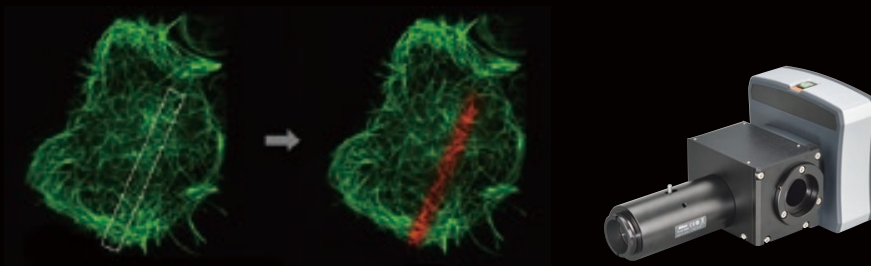
A new point photostimulation module, available for the Ti2-LAPP modular illumination system, allows the A1 HD25/A1R HD25 to acquire confocal images while simultaneously stimulating the desired area of a sample. TIRF module, DMD module, and epi-fluorescence module are also available for the LAPP system.



Simultaneous A1 HD25/A1R HD25 imaging and photostimulation



A new photostimulation module features point scanning for stimulation of user-defined regions of interest.



DMD module simultaneously stimulates multiple regions of interest of any user-defined shape.

Various other accessories are available. Please contact Nikon or its distributors in your region

# A1ways Evolving

Nikon's capacity to respond to customer requirements has resulted in a continuously updated confocal system that exhibits outstanding performance. A1's latest innovation is the addition of a large 25mm field of view, opening new frontiers in research.

- Video rate high-speed imaging
- Hybrid scanner for simultaneous photoactivation and imaging
- 32-channel spectral imaging

- High sensitivity GaAsP detector

2008

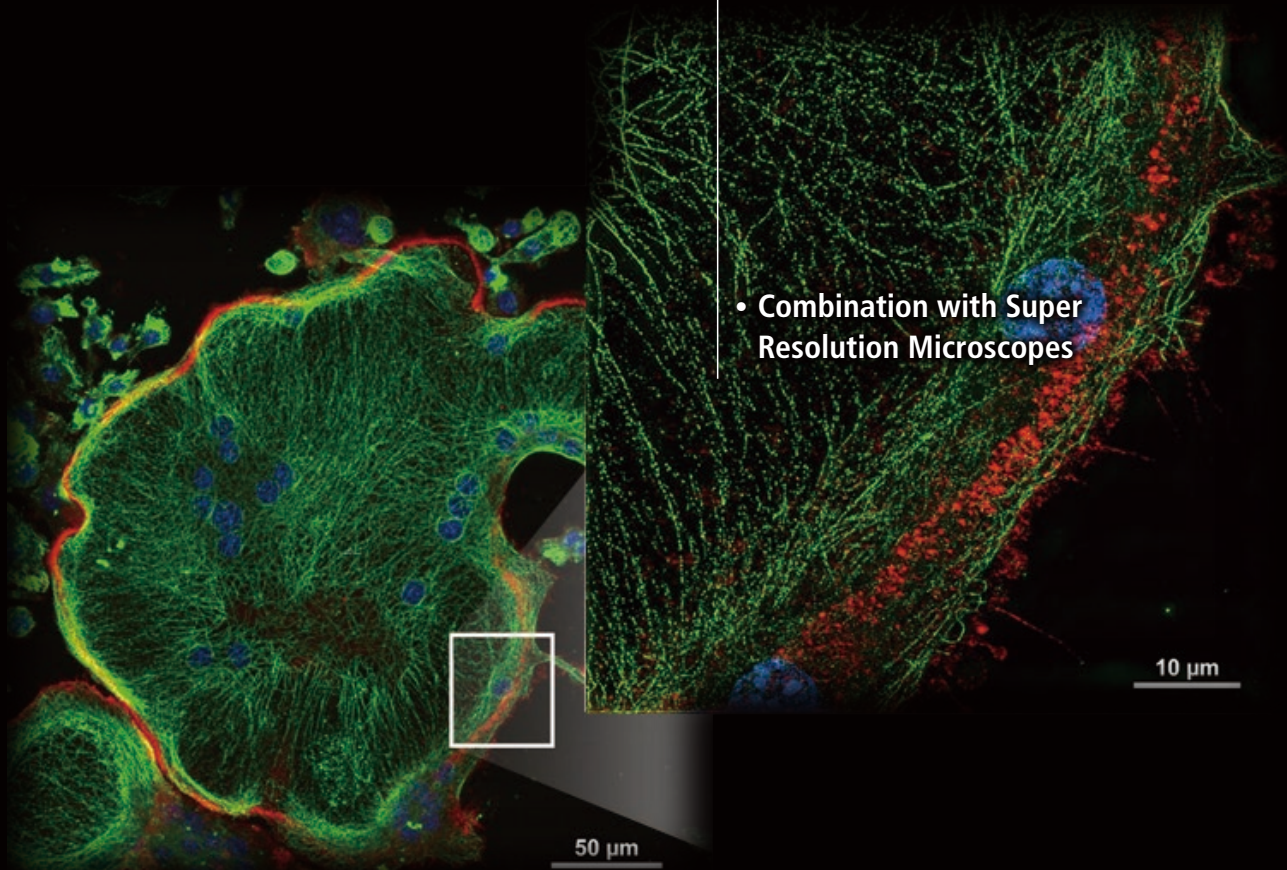
2009

2010

2011

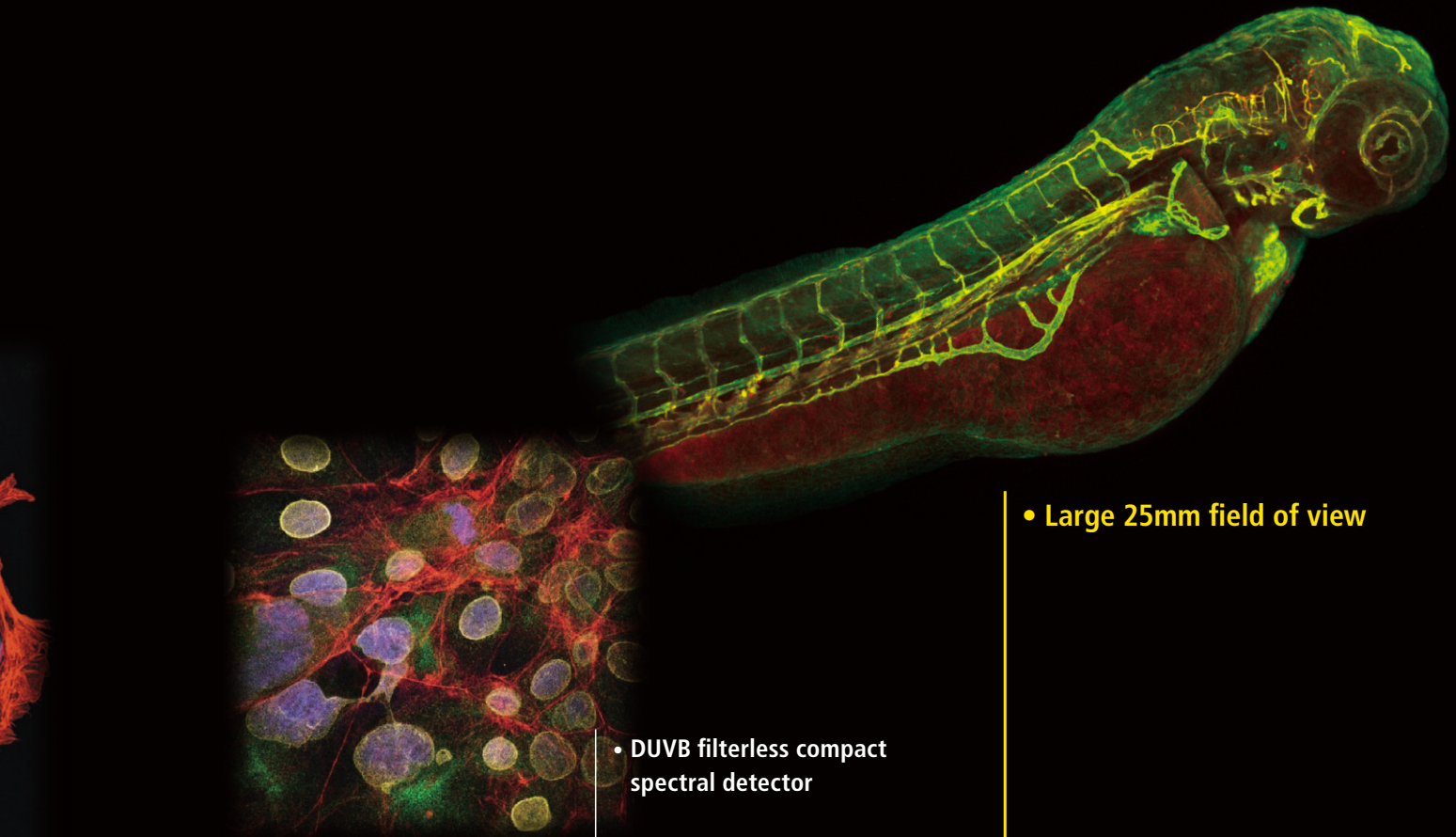
2012

2013



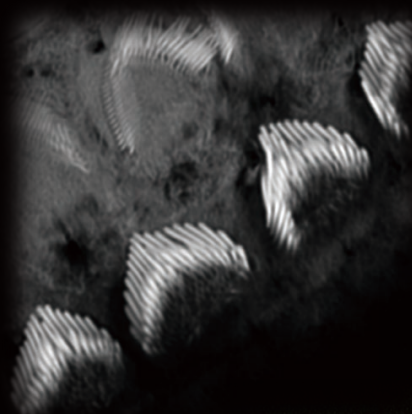
- Combination with Super Resolution Microscopes





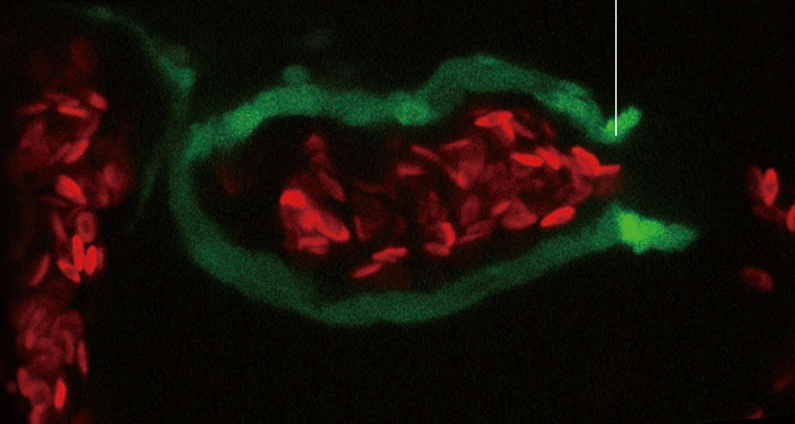
• Large 25mm field of view

• DUVB filterless compact spectral detector

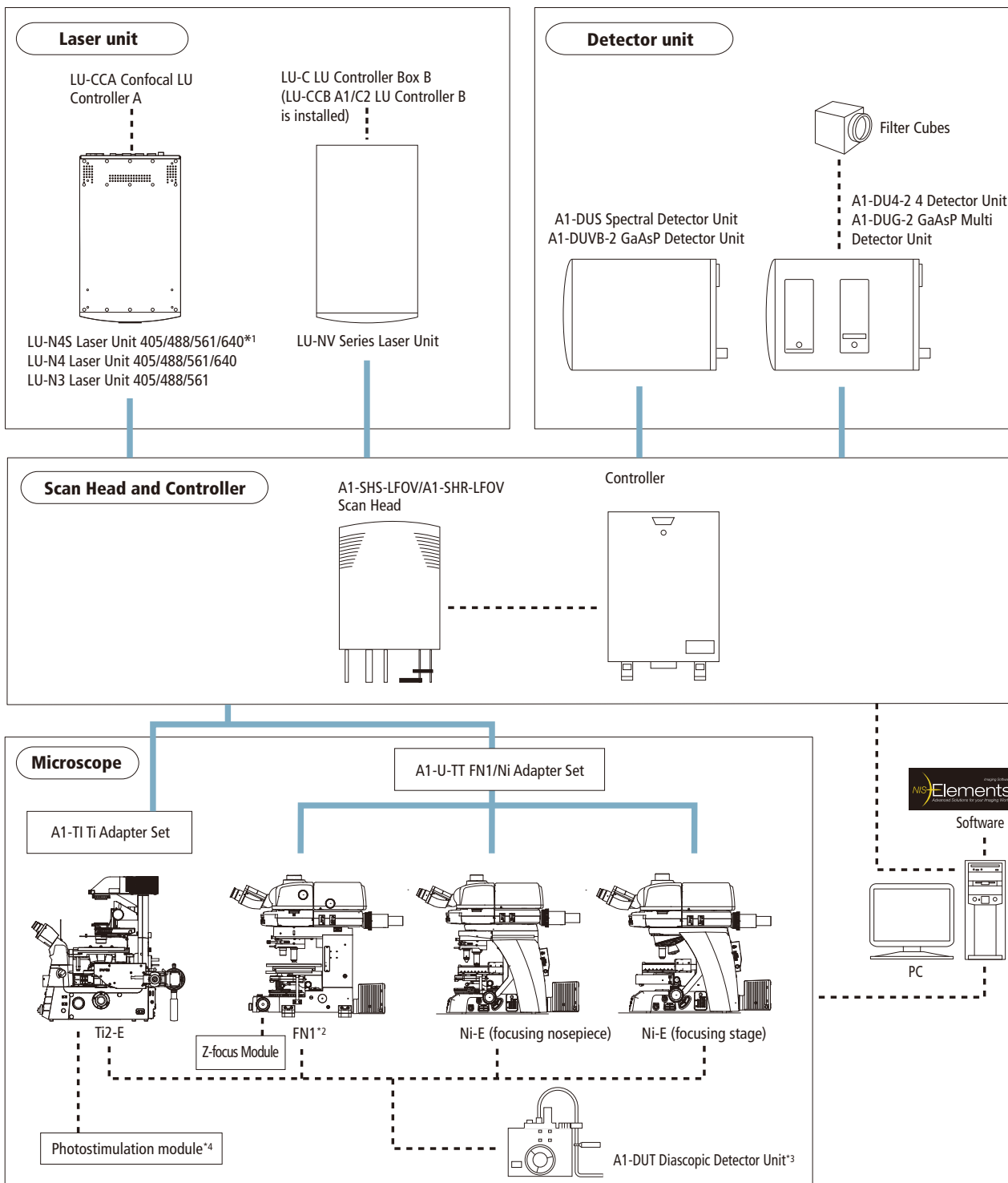


• NIS-Elements ER resolution enhancing software

• High definition resonant scanning



# System diagram



\*1 When using Spectral Detector Unit.

\*2 NI-TT Quadrocular Tilting Tube can be used.

\*3 Dedicated adapter may be required, depending on microscope model.

\*4 Adapter for Ti2-LAPP system, light source, hybrid dichroic mirror for photostimulation and imaging, and control board are all required.

## Laser units with great flexibility and efficiency

### LU-NV series

- Supports up to eight wavelengths and switching between seven fiber outputs.
- Lasers available for this series are: 405 nm, 445 nm, 458 nm, 488 nm, 514 nm, 532 nm, 561 nm, 594 nm, 640 nm and 647 nm.
- High-power lasers for the N-SIM/N-STORM super resolution microscope are available.



### LU-N4/N4S 4-laser unit/ LU-N3 3-laser unit

The LU-N4/LU-N4S is equipped with four lasers (405 nm, 488 nm, 561 nm, and 640 nm), while the LU-N3 has three lasers (405 nm, 488 nm, and 561 nm). The LU-N4S is compatible with spectral imaging.



# Specifications

		A1 HD25	A1R HD25
Scan head input/output port		1 laser input port 2 signal output ports for standard, spectral and optional detector*1	
Laser	LU-N3 3-laser unit	405 nm, 488 nm, 561nm lasers are installed; built-in AOTF *Cannot be used with A1-DUS spectral detector	
	LU-N4/N4S 4-laser unit	405 nm, 488 nm, 561 nm, 640 nm lasers are installed; built-in AOTF *LU-N4 cannot be used with A1-DUS spectral detector	
	LU-NV series laser unit	Compatible lasers : 405 nm, 445 nm, 458 nm, 488 nm, 514 nm, 532 nm, 561 nm, 594 nm, 640 nm, 647 nm ; built-in AOTF	
Standard fluorescence detector	Wavelength	400-750 nm	
	Detector	A1-DU4-2 4 Detector Unit: 4 Multi-Alkali PMTs A1-DUG-2 GaAsP Multi Detector Unit: 2 GaAsP PMTs + 2 Multi-Alkali PMTs	
	Filter cube	6 filter cubes commonly used for a microscope mountable on each of three filter wheels Recommended wavelengths: 450/50, 482/35, 515/30, 525/50, 540/30, 550/49, 585/65, 595/50, 700/75	
Diascopic detector (option)	Wavelength	485-650 nm	
	Detector	Multi-Alkali PMT	
FOV		Ti2-E: Square inscribed in a ø25 mm circle Ni-E/FN1: Square inscribed in a ø18 mm circle	
Image bit depth		4096 gray intensity levels (12 bit)	
Scan head	Standard image acquisition	Scanner: galvano scanner x2 Pixel size: max. 4096 x 4096 pixels Scanning speed: Standard mode: 1.4 fps (512 x 512 pixels, bi-direction, 0.72x zoom) 2 fps (512 x 512 pixels, bi-direction, 1x zoom) Fast mode: 10 fps (512 x 512 pixels, bi-direction, 8x zoom) 200 fps (512 x 16 pixels, bi-direction, 8x zoom)*2 Zoom: 0.72-1000x continuously variable Scan mode: X-Y, X-T, X-Z, XY rotation, Free line, Line-Z	
	High-speed image acquisition	Scanner: resonant scanner (X-axis, resonance frequency 7.8 kHz), galvano scanner (Y-axis) Pixel size: max. 1024 x 1024 pixels Scanning speed: 15 fps (1024 x 1024 pixels), 30 fps (512 x 512 pixels), 60 fps (256 x 256 pixels) to 720 fps (512 x 16 pixels), 7,800 lines/sec (line speed) Zoom: 0.72x, 0.82x, 0.9x, 1x, 1.2x, 1.5x, 1.75x, 2x, 2.4x, 3x, 4x, 5x, 6x, 7x, 8x Scan mode: X-Y, X-T, X-Z Acquisition method: High-speed image acquisition,	
	Dichroic mirror	Low-angle incidence method, Number of positions: 8 Standard filter: 405/488/561/640, BS20/80 Optional filter: 405/488, 405/488/561, 405/488/543/640, 457/514	
	Pinhole	12-256 µm variable (1st image plane)	
Spectral detector (option)	A1-DUS spectral detector unit	Number of channels: 32 Wavelength detection range: 400 - 750 nm Spectral image acquisition speed: 4 fps (256 x 256 pixels) Maximum pixel size: 2048 x 2048 (Spectral mode/Virtual filter mode) Wavelength resolution: 2.5/6.0/10.0 nm, wavelength range variable in 0.25 nm steps Compatible with galvano scanner only	
	A1-DUVB-2 GaAsP detector unit	Number of channels: 1 GaAsP PMT with variable emission plus 1 optional GaAsP PMT (A1-DUVB-OP) with a user-defined dichroic mirror and barrier filter Wavelength detection range: 400 - 720 nm, narrowest: 10 nm, broadest: 320 nm Maximum pixel size: 4096 x 4096 (CB mode/VB mode) Wavelength resolution: 10 nm, wavelength range variable in 1 nm steps Compatible with galvano and resonant scanners	
Z step		Ti2-E: 0.01 µm, 0.02 µm (with encoder control), FN1 stepping motor: 0.05 µm, Ni-E: 0.025 µm	
Compatible microscopes		ECLIPSE Ti2-E inverted microscope, ECLIPSE FN1 fixed stage microscope, ECLIPSE Ni-E upright microscope (focusing nosepiece type and focusing stage type)	
Option	Motorized XYZ	Motorized XY stage (for Ti2-E/Ni-E), High-speed Z stage (for Ti2-E), High-speed piezo objective-positioning system (for FN1/Ni-E)	
	Photostimulation module*3 (for Ti2-E)	XY galvano scanning unit (Light source: LU-N3/N4 Laser Unit) DMD module (Light source: C-LED/FL Epi-FL LED illuminator, LU-N3/N4 laser unit) Stimulation form: ROI/line/point Stimulation mode: Sequential, Simultaneous	
Software	Acquisition/analysis	Basic software: NIS-Elements C Optional software for high-resolution acquisition: NIS-Elements ER	
	Display/image generation	2D analysis, 3D volume rendering/orthogonal, 4D analysis, spectral unmixing	
	Image format	JP2, JPG, TIFF, BMP, GIF, PNG, ND2, JFF, JTF, AVI, ICS/IDS	
	Application	FRAP, FLIP, FRET(option), photoactivation, three-dimensional time-lapse imaging, multipoint time-lapse imaging, colocalization	
Control computer	OS	Windows 10 Pro 64bit, English version or Japanese version OS Version 1709 Windows 7 Professional, 64bit, SP1 English version or Japanese version, Windows Update KB3118401 or later	
	CPU	Intel Xeon W-2125 (4.0GHz, 4 cores, 8.25 MB, 2666 MHz) or higher	
	RAM	32GB or 64GB	
	HDD	1st HP Z Turbo G2 512GB PCIe M.2 SSD 2nd SATA HDD 2TB	
	Optical Drive	Super Multi drive, up to x16 speed or higher	
	Graphics	NVIDIA Quadro P600 or higher (NIS-Elements ER: NVIDIA Quadro P4000) (PCI Express / two-screen split display supported)	
	Extension slot	Two PCI Express 3.0 (x16) slots (one slot to be used for graphics) One PCI Express 3.0 (x8) slot Two PCI Express 2.0 (x4) slot	
	LAN port	10/100/1000 Network/Interface x 2 (for connection to controller, for connection to external LAN)	
Monitor		1600 x 1200 or higher resolution, dual monitor configuration recommended	
Recommended installation conditions		Temperature 23 ± 5 °C, humidity 70 % (RH) or less (non-condensing)	

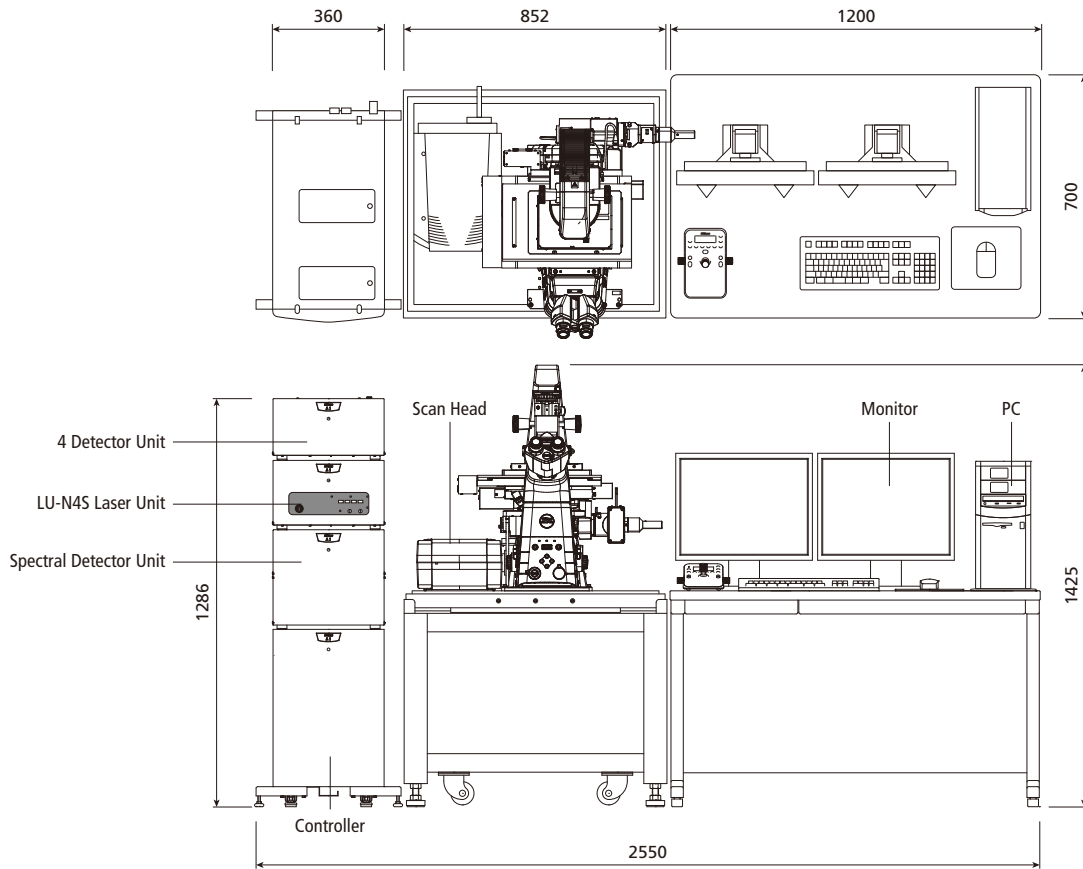
\*1 FCS/FCFS/FLIM is possible in combination with third-party systems

\*2 Fast mode is compatible with zoom 8-1000x and scanning modes X-Y and X-T. It is not compatible with Rotation, Free line, CROP, ROI, Spectral imaging, Stimulation and FLIM.

\*3 Adapter for Ti2-LAPP system, light source, hybrid dichroic mirror for photoactivation and imaging, and control board are all required.

# Layout

Unit: mm



\* Layout sample

Specifications and equipment are subject to change without any notice or obligation on the part of the manufacturer. June 2019 ©2010-19 NIKON CORPORATION

	<b>WARNING</b>
TO ENSURE CORRECT USAGE, READ THE CORRESPONDING MANUALS CAREFULLY BEFORE USING YOUR EQUIPMENT.	

Monitor images are simulated.

Company names and product names appearing in this brochure are their registered trademarks or trademarks.

N.B. Export of the products\* in this brochure is controlled under the Japanese Foreign Exchange and Foreign Trade Law. Appropriate export procedure shall be required in case of export from Japan.

\*Products: Hardware and its technical information (including software)

**WARNING-LASER RADIATION**  
**AVOID EXPOSURE TO BEAM**  
**CLASS 3B LASER PRODUCT**

Total Power 500mW MAX.  
 CW 400~700nm  
 IEC/EN60825-1 : 2007, 2014

Complies with FDA performance standards for laser products except for deviations pursuant to Laser Notice No. 50, dated June 24, 2007.

**DANGER-VISIBLE AND INVISIBLE LASER RADIATION**  
**AVOID EYE OR SKIN EXPOSURE TO DIRECT OR SCATTERED RADIATION**  
**CLASS 4 LASER PRODUCT**

Total Power 1500mW MAX.  
 CW 370~790nm  
 IEC/EN60825-1 : 2007, 2014

Complies with FDA performance standards for laser products except for deviations pursuant to Laser Notice No.50 dated June 24, 2007.



## NIKON CORPORATION

Shinagawa Intercity Tower C, 2-15-3, Konan, Minato-ku, Tokyo 108-6290, Japan  
 phone: +81-3-6433-3705 fax: +81-3-6433-3785  
<https://www.healthcare.nikon.com/>

ISO 14001 Certified  
for NIKON CORPORATION

### NIKON INSTRUMENTS INC.

1300 Walt Whitman Road, Melville, N.Y. 11747-3064, U.S.A.  
 phone: +1-631-547-8500; +1-800-52-NIKON (within the U.S.A. only)  
 fax: +1-631-547-0306  
<https://www.microscope.healthcare.nikon.com/>

### NIKON INSTRUMENTS EUROPE B.V.

Tripolis 100, Burgenweeshuispad 101, 1076 ER Amsterdam, The Netherlands  
 phone: +31-20-7099-000 fax: +31-20-7099-298  
[https://www.microscope.healthcare.nikon.com/en\\_EU/](https://www.microscope.healthcare.nikon.com/en_EU/)

### NIKON INSTRUMENTS (SHANGHAI) CO., LTD.

CHINA phone: +86-21-6841-2050 fax: +86-21-6841-2060  
 (Beijing branch) phone: +86-10-5831-2028 fax: +86-10-5831-2026  
 (Guangzhou branch) phone: +86-20-3882-0550 fax: +86-20-3882-0580

### NIKON CANADA INC.

CANADA phone: +1-905-602-9676 fax: +1-905-602-9953

### NIKON FRANCE S.A.S.

FRANCE phone: +33-1-4516-45-16 fax: +33-1-4516-45-55

### NIKON GMBH

GERMANY phone: +49-211-941-42-20 fax: +49-211-941-43-22

### NIKON INSTRUMENTS S.p.A.

ITALY phone: +39-55-300-96-01 fax: +39-55-30-09-93

### NIKON GMBH SWITZERLAND

SWITZERLAND phone: +41-43-277-28-67 fax: +41-43-277-28-61

### NIKON UK LTD.

UNITED KINGDOM phone: +44-208-247-1717 fax: +44-208-541-4584

### NIKON CEE GMBH

AUSTRIA phone: +43-1-972-6111 fax: +43-1-972-611-140

### NIKON SINGAPORE PTE LTD

SINGAPORE phone: +65-6559-3651 fax: +65-6559-3668

### NIKON INSTRUMENTS KOREA CO., LTD.

KOREA phone: +82-2-2186-8400 fax: +82-2-555-4415